

PRODUCT TECHNICAL SPECIFICATION

RISER MANIFOLD

SCOPE

Riser Manifold, Groove, Ductile Iron

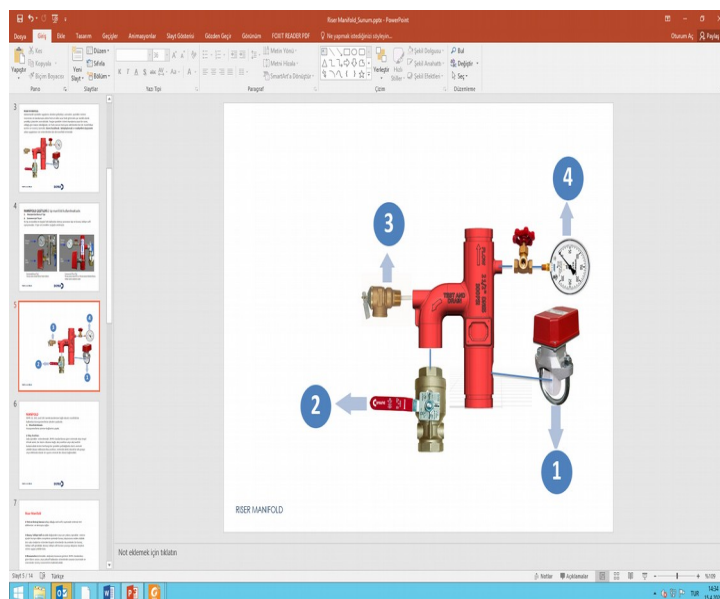
Sizes and Materials comply with UL258 / FM1626 Standards,
DN 50, 65, 80, 100, 150

PN 21

UL-FM approved

PRODUCT DEFINITION

In wet sprinkler systems, components shown in Figure 1 should be available next to all zones or floor sprinkler installations, in accordance with NFPA 13 requirements. With this developed product, a compact product has been created by combining all of these parts.



The system comprises a design that brings together 4 main parts.

1. Flow Switch
2. Test & Drain Valve
3. Pressure Relief Valve
(It is optional. It can be assembled to the standard product afterwards.)
4. Manometer

Figure 2 shows the locations of the zone or floor control components within the sprinkler system in the installation. A riser manifold was created by bringing together all the intercepted components.

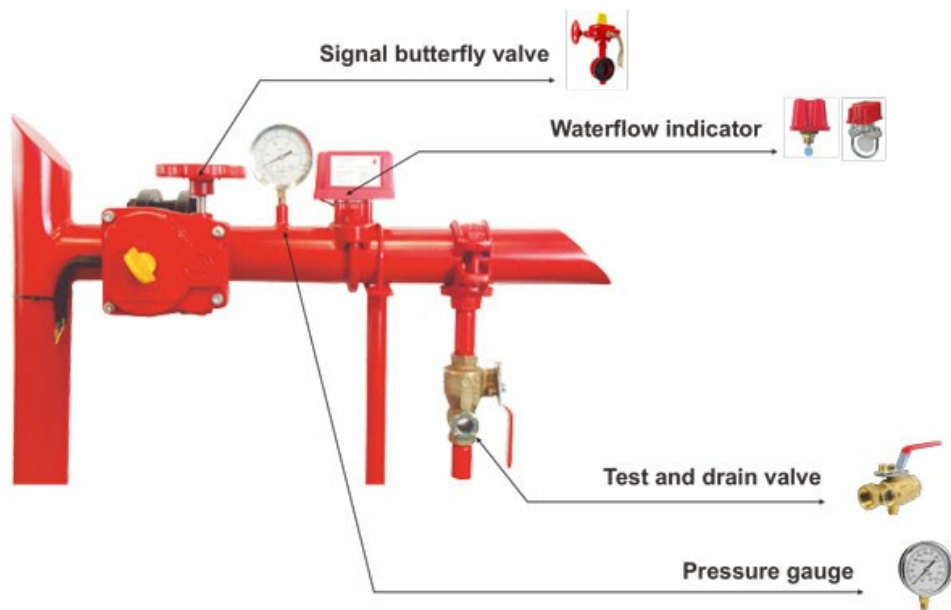


Figure 1- Riser manifold components

A. MATERIAL AND COMPONENTS

Body	in accordance with the TS EN 1563 Standard; Ductile Iron, EN JS 1020 /EN-GJS-400
Flow Switch	TSE or FM-UL approved flow switches
Test & Drain Valve	FM-UL approved test and drain valve with K5,6 or K8,0 orifice
Manometer	FM-UL approved pressure gauge
Gauge Valve	UL approved slide valve
Options	175 PSI ½" Relief Valve

B. NOMINAL PRESSURE / OPERATING PRESSURE

300 PSI

C. OPERATING TEMPERATURE RANGE

-10 ~ +120 °C

D. MARKING

Minimal marking that is legible and obtained in the form of embossing from casting;

MANUFACTURER (BRAND)

BODY MATERIAL: **EN-GJS-400**

PRESSURE GRADING: **300 PSI / 21 Bar**

NOMINAL SIZE: **DN50 / DN65 / DN80 / DN100 / DN150**

E. PAINT

After Casting Cast Iron parts are primed using Shop Primer

Before Assembly Wet Paint

F. TEST

in accordance with the UL258, FM1626 Standards; RATE-A (Zero leakage)

G. WARRANTY

2-year warranty against workmanship and material defects

H. PACKAGING AND SHIPMENT

Products are shipped as packed in individual plastics bags

I. OTHER ISSUES

The valves with an operating pressure of 21 bars not only fulfill opening, closing and partial adjustment functions in installations, but also provide 100% sealing in the closed position.